



# GAT MONTHLY MEMBERSHIP PROGRESS REPORT

Results as of: 5/31/2023

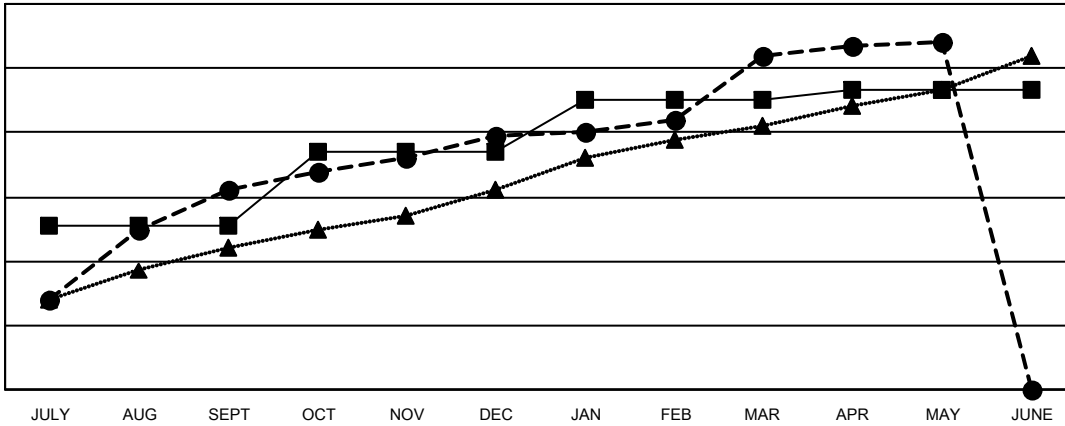
Multiple District 322

LOCATION: INDIA

Clubs			
RESULTS FOR 2022-2023			
QUARTER	NEW CLUB GOAL	NEW CLUBS	DROPPED CLUBS
JULY/AUG/SEPT	51	62	15
OCT/NOV/DEC	23	17	43
JAN/FEB/MAR	16	25	23
APR/MAY/JUNE	3	4	3

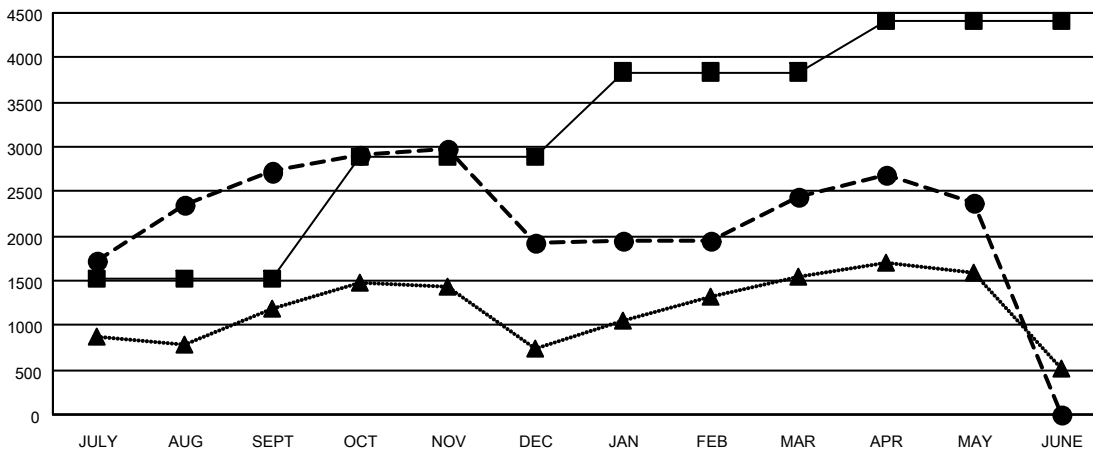
Members			
RESULTS FOR 2022-2023			
QUARTER	MEMBER GROWTH NET GOAL	MEMBER GROWTH ACTUAL	DROPPED MEMBERS ACTUAL (including transfers)
JULY/AUG/SEPT	1523	3,594	731
OCT/NOV/DEC	1363	1,537	2,231
JAN/FEB/MAR	953	1,395	671
APR/MAY/JUNE	575	684	682

GOALS AND ACTUAL NEW CLUBS CUMULATIVE



- - CURRENT YEAR GOALS FOR NEW CLUBS
- - CURRENT YEAR ACTUAL NEW CLUBS
- ▲ - LAST YEAR ACTUAL NEW CLUBS

GOALS AND ACTUAL MEMBERS CUMULATIVE



- - MEMBER GROWTH NET GOAL
- - MEMBER GROWTH ACTUAL
- ▲ - LAST YEAR MEMBERSHIP ACTUAL

<b>DROPPED CLUBS: 84</b>	749 CLUBS OF 1154 ADDED 1 OR MORE NEW MEMBERS	<b>GENDER DISTRIBUTION</b>
<b>DROPPED MEMBERS</b>	<a href="#">CLICK HERE FOR CUMULATIVE MEMBERSHIP DATA</a>	MALE 26,997 (67.93%)
DECEASED 111		FEMALE 12,732 (32.04%)
CLUB CANCELLED 1,237		NON BINARY 0 (0.00%)
OTHER 2,967		PREFER NOT TO ANSWER 11 (0.03%)
<b>TOTAL 4,315</b>		<b>TOTAL FAMILY UNIT MEMBERS 21,600</b>
		FAMILY MEMBERS PAYING HALF DUES 13,337